

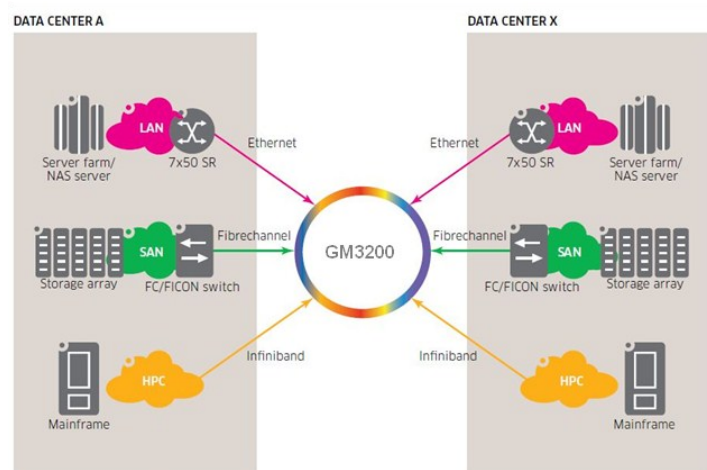
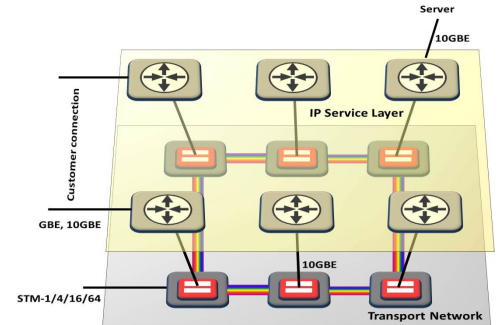
GigaMux 3200 Optical Transport Solution

PRODUCT HIGHLIGHTS

- High Scalability
- Small Footprint
- Low Power Consumption
- CWDM/DWDM and Hybrid Solutions
- Metro and Backbone Applications up to 800km (Multiple PoP's)
- Data Center Applications up to 140KM (Point to Point)
- Cost-Effective 10GBE Transport
- FiberChannel to 16G
- SDH/OTN Features
- Layer 1 Encryption
- Low Latency
- In-Band Management
- SNMP and Browser-Based GUI Network Management

GigaMux 3200 - DWDM/CWDM platform that offers Optical Transport Solutions in Metro and Backbone Networks

GigaMux 3200 provides an unrestricted transport layer to broadband services in carrier and enterprise applications. The platform creates dedicated demarcation interfaces to higher service layers. The protocol-independent design allows GigaMux 3200 to transport and extend traffic of Ethernet, SONET/SDH and SANs simultaneously and in native format. By supporting each traffic type natively, the network can grow and evolve based on traffic requirements.



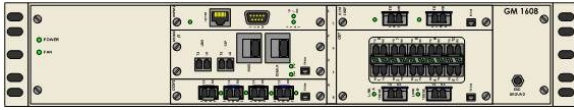
GigaMux 3200 is the ideal platform for cost-effective support of managed services and secure, high capacity data center connectivity.

The GigaMux 3200 Platform offers:

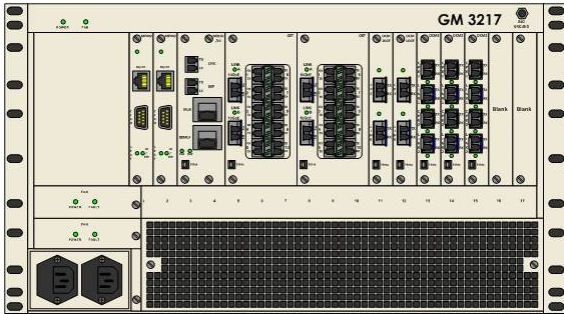
- Simultaneous CWDM and DWDM in a single shelf
- Highly-scalable installations with 2 chassis types 2-RU, 6-RU
- Up to 10G Ethernet, SDH STM-1/4/16/64, FC up to 16G in one platform
- Supports Point-to-Point, Add/Drop, and Ring/Mesh topologies
- 80 Channel wavelength support with tunable Transceiver
- AES 256 Encryption with Diffie-Hellman Key Exchange
- 100Gb/s Alien Wavelength Transport

GigaMux 3200 Components

CHASSIS



GM3208—8 Slot Chassis (2-RU)
AC and DC Version

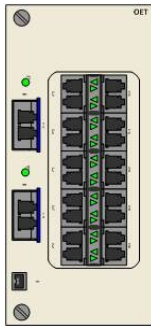


GM3217—17 Slot Chassis (6-RU)
AC and DC Version

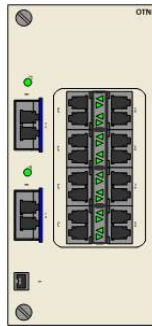
TRANSPONDER/MUXPONDER



DMM
2 Port GbE
Muxponder
2,5G C/DWDM



OET10GF
10 Port GbE
Muxponder
Dual 10G C/DWDM



OTN10GF
8 Port Multiprotocol
Muxponder
OTN Line Interface
Dual 10G C/DWDM



OCM10GF
1 Port 10GbE
Transponder/w.FEC
10G C/DWDM



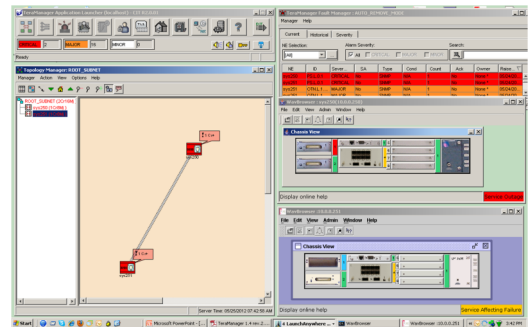
ODC
Dual 1 Port
Multiprotocol 1G—16G
Transponder/w.FEC
Encryption
10G C/DWDM

OTHER COMPONENTS

- MUX/DEMUX** CWDM—up to 16 channels;
- Filters:** DWDM—up to 80 channels, Band Pass Filter,
- Booster Amps:** Inline, Pre-Amplifier
- Dispersion Compensation Modules**
- Optical Path Switch Module**

MANAGEMENT

- Command Line Interface**
- Graphical User Interface (Java Applett)**
- SNMPv3, Telnet, SSH, Radius**



Sorrento Networks International Inc.
6920 Koll Center Parkway, Suite 220
Pleasanton, CA 94556
info@sorrentonet.com
www.sorrentonet.com

Sorrento Networks is a global provider of cost effective optical Transport Solutions. Since more than 20 years developing and delivering solutions to Carriers and Enterprise customers. Sorrento Networks is a fully owned daughter company of Comtek Network Systems, with facilities in the USA, United Kingdom, Netherlands and Germany (www.comtek.co.uk)

USA phone contact: +1 925 399 7900

EMEA phone contact: +44 33 3344 1260